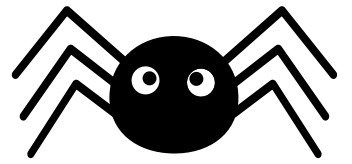
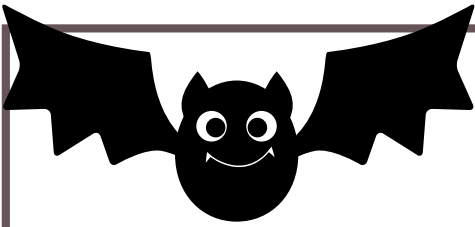


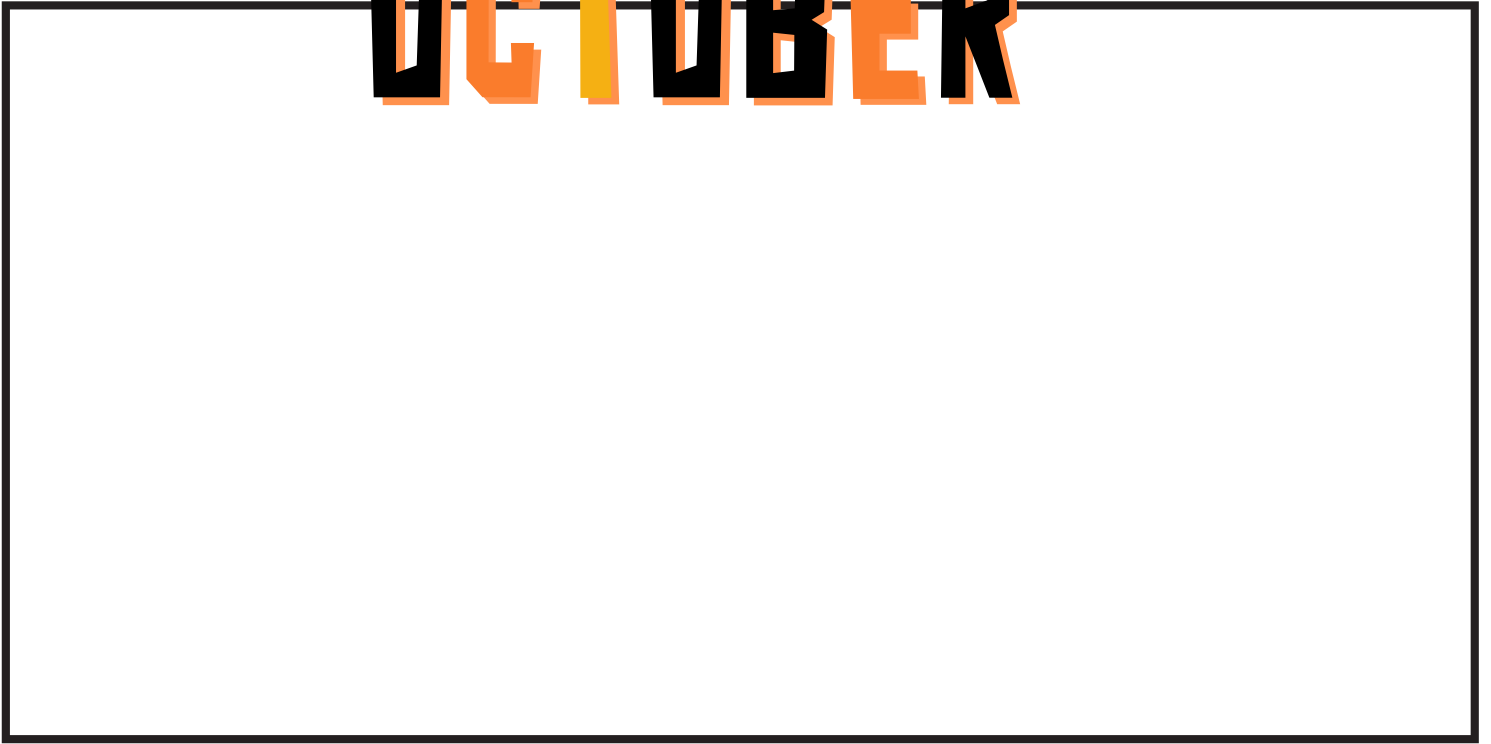


Handwriting practice lines consisting of multiple sets of three horizontal lines: a solid top line, a dashed middle line, and a solid bottom line.



A series of ten horizontal writing lines for a handwriting practice sheet. Each line set consists of a solid top line, a dashed middle line, and a solid bottom line.

OCTOBER



Handwriting practice lines consisting of multiple sets of three horizontal lines: a solid top line, a dashed middle line, and a solid bottom line. There are ten such sets of lines arranged vertically across the lower half of the page.



Handwriting practice lines consisting of solid top and bottom lines with a dashed middle line. There are five sets of these lines on the page.